

LEW'S® LASER^{MG} SPEED SPOOL®

LSG1SMG, LSG1HMG, LSG1SHMG

Driven by innovation
Fueled with Passion

Feel the Difference!



Reel Specifications

Model	Weight (oz.)	Gear Ratio	Line Capacity (yd./lb.)	IPT
LSG1SMG	7.2	5.4:1	150/12	23"
LSG1HMG	7.2	6.4:1	120/12	28"
LSG1SHMG	7.2	7.1:1	120/12	31"

FEATURES:



- One-piece, lightweight graphite frame
- Premium 8 bearing system with stainless steel double shielded ball bearings and Zero-Reverse one-way clutch bearing
- Externally adjustable Magnetic Control System (MCS)
- Machined and anodized aluminum U-spool
- Durable Rulon drag system provides up to 10 lbs. drag power Zirconia line guide
- 95mm bowed aluminum handle with Lew's® custom SoftTouch contoured paddle

ATTENTION BRAIDED LINE USERS!

If your Lew's® Baitcast reel has pre-drilled holes in the spool, you may tie your braid directly to the spool, by passing the braid thru the provided holes and tying a uni-knot.

If your Lew's® baitcast reel does not have pre-drilled holes in the spool, you will need to first tie on and spool at least 20 revolutions of monofilament line, and then tie your braided line to the monofilament line, with either a back-to-back uni-knot or an Albright knot.

Continue to spool your reel as normal, keeping strong tension on the line to ensure the line is firmly wound onto the spool to keep from "digging in" to underlying line layers when pressure is put on the line from fighting fish.

FAILURE TO PROPERLY SPOOL BRAIDED LINE ONTO YOUR REELS SPOOL WILL RESULT IN LINE SLIPPAGE, AND THE IMPRESSION YOUR DRAG IS NOT WORKING PROPERLY.

Performance – Right out of the Box!

Your Laser MG Speed Spool® is designed for performance and functionality. From the way it conforms to your hand, to the way it reacts crisply and effortlessly to your command, you'll know the minute you grab onto the Speed Spool® that you've got a quality reel.

Your Laser MG Speed Spool® reel exploits several new developments which will allow you to set yourself apart from the competition.

Lightweight Graphite Frame and Sideplates

Your Laser MG Speed Spool® reel utilizes a lightweight graphite frame and sideplates. Lightweight plus strong, so you'll never have to worry about frame or gears twisting or torquing.

Lightweight Machined Aluminum U-spool

Machined Aluminum Spool 

The spool on your Laser MG Speed Spool® reel has been engineered to maximize casting distance. Anodized to withstand oxidation and abrasion, machined and built for deep capacity.

Zero-Reverse Bearing



The handle on your Laser MG Speed Spool® reel will only rotate forward for rock solid hook setting power. When you release the handle it will hold its position because of anti-reverse bearings, never losing an inch on your catch; an invaluable property to have when you're pullin' it in.

Full-Release Magnetic Control System (MCS)

Magnetic Control System 

In order to combat backlash your Laser MG Speed Spool® reel is furnished with an externally adjustable, full-release magnetic braking system. As the spool accelerates it experiences magnetic resistance, which can be controlled with a dial on the palming sideplate. A full-release magnetic brake has the ability to be backed for enough away from the spool to completely negate any effect on the acceleration of the spool.



Bowed 95MM Aluminum Handle

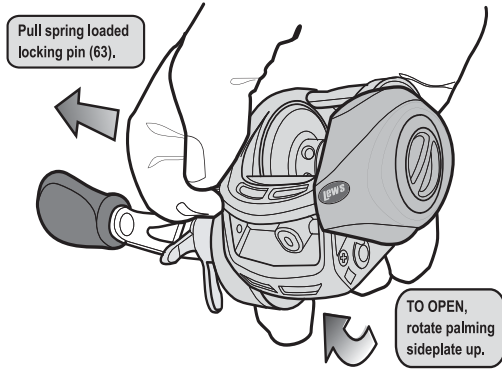
Our 95mm bowed aluminum handle will give you all the cranking power you need. The Lew's® custom paddle handle knobs are an added bonus and will provide comfortable fit and ease for all day fishing.

Maintenance and Care

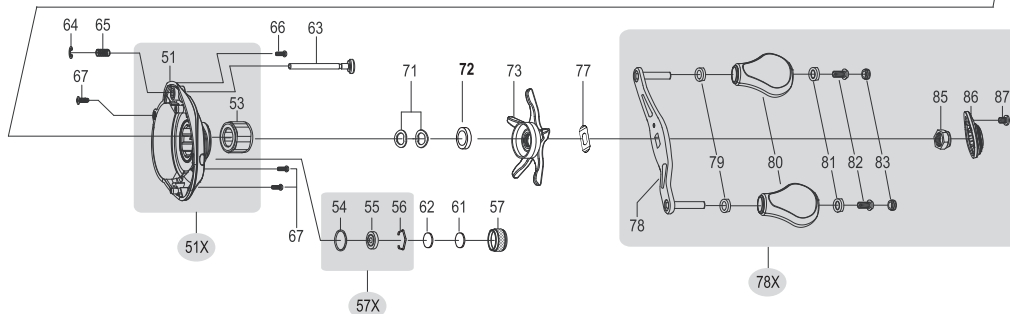
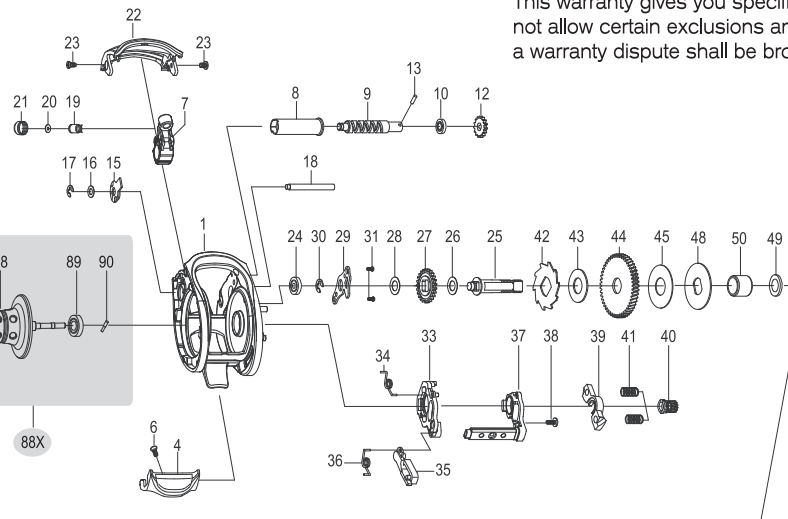
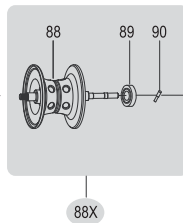
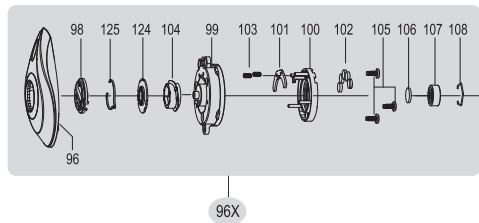
When applying lubricant to your Speed Spool® reel, avoid using multi-purpose oil. Use lightweight oils or greases made for fishing reels. Apply oil to all bearings, the crankshaft and the worm gear. Apply grease to the bushings, pinion gears, drive gears, and crank gears.

After usage, your reel should be inspected for dirt or sand and cleaned if excessive build-up is present. If your reel has come in contact with saltwater it is important to flush all parts with water, dry and re-lubricate your reel. Through diligent cleaning and maintenance your Lew's® reel will provide you with years of reliability and sound performance.

fig 1 To remove palming sideplate pull locking pin (63) away from reel body.



For professional cleaning and maintenance send your reel postage prepaid to:
 Lew's 3031 N. Martin Ave.
 Springfield, MO 65803
 Phone: 877-470-5397
 FAX: 1-417-881-5387
 lews.com



Lew's® warrants its products¹ to withstand normal² use for the purpose designed and intended when manufactured for a period of one (1) year from the original retail sale date to the original retail consumer. Lew's® will at its option repair or replace³ Lew's® products when required for the warranty period and return⁴ the product to the owner at no additional⁵ cost to the owner.

¹Numerous products have been manufactured under variations of the Lew's® name and under the Lew's® Logo by multiple businesses over the past 50 years. This warranty is specifically for products manufactured on behalf of Lew's® of Springfield, Missouri USA since January 1, 2010. Lew's® products manufactured by or on behalf of other entities prior to January 1, 2010 are not covered by this warranty. In all circumstances, this Warranty is Limited in Value to the original retail value of the product and is limited to actual damage to the Lew's® product and only the Lew's® product. ²Loss of a product, and loss/damage of a product or parts due to the attempted repair or servicing of a Lew's® product by any person or business other than Lew's® or Lew's® Authorized Warranty Service Agent, and damage caused by or resulting from abuse, misuse, lack of recommended maintenance, accident, acts of God, and shipping damages occurring in transit to Lew's® or Lew's® Authorized Agent are outside the scope of Lew's® Limited Warranty and will be repaired through Lew's® after warranty services at the expense of the consumer. ³Any products replaced by Lew's® will be new or remanufactured by a Lew's® Authorized Agent with the same or next model upgrade product. ⁴Lew's® will return warranted products to the consumer by reasonable means as determined by Lew's®. ⁵Express or expedited services are the responsibility of the consumer as is sending the product to Lew's® or Lew's® Authorized Agent, for Warranty Service. Lew's® and Lew's® Service Agents as authorized by Lew's® are the sole agents authorized to repair or replace Lew's® products under the terms of this warranty. Only written changes by an officer of Lew's® can alter the terms or conditions of this warranty.

This warranty gives you specific legal rights including additional rights extended by some states which do not allow certain exclusions and limitations. Any action brought against Lew's® for the purpose of settling a warranty dispute shall be brought and litigated in the State of Missouri, County of Greene.

KEY #	PART NAME	KEY #	PART NAME	KEY #	PART NAME
1	FRAME	37	CLUTCH LINK	77	LEAF SPRING
4	CLUTCH BAR	38	CLUTCH LINK SCREW	78	HANDLE
6	CLUTCH BAR SCREW	39	PINION YOKE	78X	HANDLE ASSEMBLY
7	LEVELWIND ASSEMBLY	40	PINION GEAR	79	BUSHING
8	PIPE	41	PINION YOKE SPRING (2)	80	HANDLE KNOB
9	WORM SHAFT	42	RATCHET	81	BALL BEARING (2)
10	BALL BEARING	43	RATCHET WASHER	82	HANDLE KNOB SCREW
12	IDLER(S)	44	DRIVE GEAR	83	HANDLE KNOB CAP
13	WORM SHAFT PIN	45	DRAG WASHER (L-3)	85	HANDLE NUT
15	WORM SHAFT BUSHING (B)	48	DRAG WASHER (D)	86	HANDLE NUT CAP
16	WORM SHAFT WASHER	49	SLEEVE WASHER (OPTIONAL)	87	SCREW
17	E-RING	50	SLEEVE	88	SPOOL
18	PILLAR	51	GEAR SIDEPLATE	88X	SPOOL ASSEMBLY
19	LEVELWIND PIN	51X	GEAR SIDEPLATE ASSEMBLY	89	BALL BEARING
20	SPACER (OPTIONAL)	53	ONE-WAY CLUTCH BEARING	90	PIN
21	LEVELWIND NUT	54	C-RING	96	PALMING SIDEPLATE
22	FRONT COVER	55	BALL BEARING	96X	PALMING SIDEPLATE ASSEMBLY
23	FRONT COVER SCREW (2)	56	BEARING RETAINER	98	CONTROL DIAL
24	BALL BEARING	57	CAST CONTROL CAP	99	SPOOL COVER
25	CRANKSHAFT	57X	CAST CONTROL CAP ASSEMBLY	101	MAGNET HOLDER PLATE-F
26	IDLER (L) WASHER (A)	61	TENSION WASHER	102	MAGNET (5)
27	IDLER (L)	62	SPOOL SPACER (B)	103	MAGNET HOLDER SPRING (2)
28	IDLER(L) WASHER (B)	63	LOCKING PIN	103	SLIDE CAM-F
29	BEARING PLATE	64	E-RING	105	SPOOL COVER SCREW (3)
30	E-RING	65	LOCKING PIN SPRING	106	SPOOL SPACER-A
31	BEARING PLATE SCREW	66	GEAR SIDEPLATE SCREW (A)	107	BALL BEARING
33	CLUTCH CAM	67	GEAR SIDEPLATE SCREW (B)	108	BEARING RETAINER
34	CLUTCH SPRING	71	DRAG SPRING WASHER (A-2)	124	SLIDE CAM-D
35	KICK LEVER	72	DRAG SPACER	125	CLICK SPRING
36	KICK LEVER SPRING	73	STAR DRAG		

LEW'S LASER MG SPEED SPOOL®

LSG1SHL MG



Driven by innovation – Fueled with Passion
Feel the Difference!

Reel Specifications

Model	Weight (oz.)	Gear Ratio	Line Capacity (yds./lbs.)	IPT
LSG1SHLMG*	7.2	7.1:1	120/12	31"

*Left hand retrieve.

FEATURES:



- One-piece, lightweight graphite frame
- Premium 8 bearing system with stainless steel double shielded ball bearings and Zero-Reverse one-way clutch bearing
- Externally adjustable Magnetic Control System(MCS)
- Machined and anodized aluminum U-spool, except LSG1SMG is deep forged and dimpled
- Durable Rulon drag system provides up to 10 lbs. drag power Zirconia line guide
- 95mm bowed aluminum handle with Lew's® custom SoftTouch contoured paddle

ATTENTION BRAIDED LINE USERS!

If your Lew's® Baitcast reel has pre-drilled holes in the spool, you may tie your braid directly to the spool, by passing the braid thru the provided holes and tying a uni-knot.

If your Lew's® baitcast reel does not have pre-drilled holes in the spool, you will need to first tie on and spool at least 20 revolutions of monofilament line, and then tie your braided line to the monofilament line, with either a back-to-back uni-knot or an Albright knot.

Continue to spool your reel as normal, keeping strong tension on the line to ensure the line is firmly wound onto the spool to keep from "digging in" to underlying line layers when pressure is put on the line from fighting fish.

FAILURE TO PROPERLY SPOOL BRAIDED LINE ONTO YOUR REELS SPOOL WILL RESULT IN LINE SLIPPAGE, AND THE IMPRESSION YOUR DRAG IS NOT WORKING PROPERLY.

Performance – Right out of the Box!

Your Laser MG Speed Spool® is designed for performance and functionality. From the way it conforms to your hand, to the way it reacts crisply and effortlessly to your command, you'll know the minute you grab onto the Speed Spool® that you've got a quality reel.

Your Laser MG Speed Spool® reel exploits several new developments which will allow you to set yourself apart from the competition.

Lightweight Graphite Frame and Sideplates

Your Laser MG Speed Spool® reel utilizes a lightweight graphite frame and sideplates. Lightweight plus strong, so you'll never have to worry about frame or gears twisting or torquing.

Lightweight Machined Aluminum U-spool

Machined Aluminum Spool 

The spool on your Laser MG Speed Spool® reel has been engineered to maximize casting distance. Anodized to withstand oxidation and abrasion, machined and built for deep capacity.

Zero-Reverse Bearing



The handle on your Laser MG Speed Spool® reel will only rotate forward for rock solid hook setting power. When you release the handle it will hold its position because of anti-reverse bearings, never losing an inch on your catch; an invaluable property to have when you're pullin' it in.

Full-Release Magnetic Control System (MCS)

Magnetic Control System 

In order to combat backlash your Laser MG Speed Spool® reel is furnished with an externally adjustable, full-release magnetic braking system. As the spool accelerates it experiences magnetic resistance, which can be controlled with a dial on the palming sideplate. A full-release magnetic brake has the ability to be backed for enough away from the spool to completely negate any effect on the acceleration of the spool.



Bowed 95MM Aluminum Handle

Our 95mm bowed aluminum handle will give you all the cranking power you need. The Lew's® custom paddle handle knobs are an added bonus and will provide comfortable fit and ease for all day fishing.



LASER[®] MG SPEED SPOOL[®] LSG1SHL MG

One Year Limited Warranty

Lew's[®] warrants its products¹ to withstand normal² use for the purpose designed and intended when manufactured for a period of one (1) year from the original retail sale date to the original retail consumer. Lew's[®] will at its option repair or replace³ Lew's[®] products when required for the warranty period and return⁴ the product to the owner at no additional⁵ cost to the owner.

¹Numerous products have been manufactured under variations of the Lew's[®] name and under the Lew's[®] Logo by multiple businesses over the past 50 years. This warranty is specifically for products manufactured on behalf of Lew's[®] of Springfield, Missouri USA since January 1, 2010. Lew's[®] products manufactured by or on behalf of other entities prior to January 1, 2010 are not covered by this warranty. In all circumstances, this Warranty is Limited in Value to the original retail value of the product and is limited to actual damage to the Lew's[®] product and only the Lew's[®] product. ²Loss of a product, and loss/damage of a product or parts due to the attempted repair or servicing of a Lew's[®] product by any person or business other than Lew's[®] or Lew's[®] Authorized Warranty Service Agent, and damage caused by or resulting from abuse, misuse, lack of recommended maintenance, accident, acts of God, and shipping damages occurring in transit to Lew's[®] or Lew's[®] Authorized Agent are outside the scope of Lew's[®] Limited Warranty and will be repaired through Lew's[®] after warranty services at the expense of the consumer. ³Any products replaced by Lew's[®] will be new or remanufactured by a Lew's[®] Authorized Agent with the same or next model upgrade product. ⁴Lew's[®] will return warranted products to the consumer by reasonable means as determined by Lew's[®]. ⁵Express or expedited services are the responsibility of the consumer as is sending the product to Lew's[®] or Lew's[®] Authorized Agent, for Warranty Service. Lew's[®] and Lew's[®] Service Agents as authorized by Lew's[®] are the sole agents authorized to repair or replace Lew's[®] products under the terms of this warranty. Only written changes by an officer of Lew's[®] can alter the terms or conditions of this warranty.

This warranty gives you specific legal rights including additional rights extended by some states which do not allow certain exclusions and limitations. Any action brought against Lew's[®] for the purpose of settling a warranty dispute shall be brought and litigated in the State of Missouri, County of Greene.

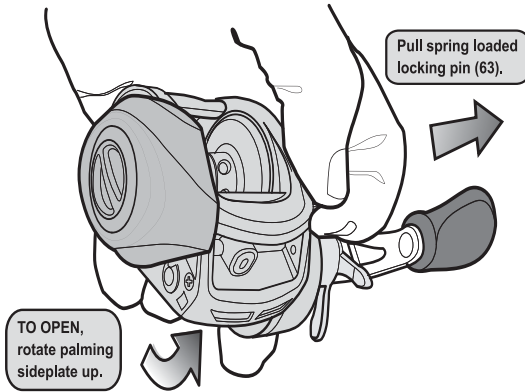
Maintenance and Care

To remove the palming sideplate, pull back plunger back, then rotate palming sideplate. When applying lubricate to your Speed Spool[®] reel, avoid using multi-purpose oil. Use lightweight oils or greases made for fishing reels. Apply oil to all bearings, the crankshaft and the worm gear.

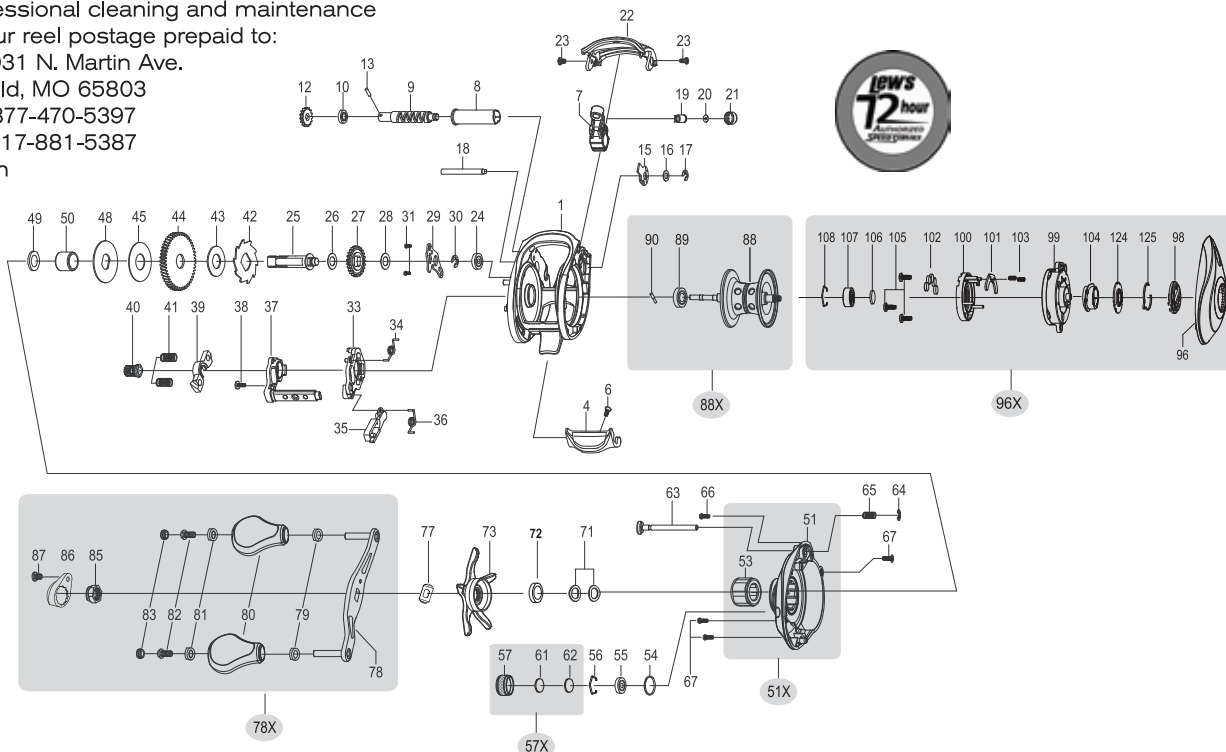
Apply grease to the bushings, pinion gears, drive gears, and crank gears.

After usage your reel should be inspected for dirt or sand and cleaned if excessive build-up is present. If your reel has come in contact with saltwater it is important to flush all parts with water, dry and re-lubricate your reel. Through diligent cleaning and maintenance your Lew's[®] reel will provide you with years of reliability and sound performance.

fig 1 To remove palming sideplate pull locking pin (63) away from reel body.



For professional cleaning and maintenance send your reel postage prepaid to:
Lew's 3031 N. Martin Ave.
Springfield, MO 65803
Phone: 877-470-5397
FAX: 1-417-881-5387
lews.com



KEY #	PART NAME	KEY #	PART NAME	KEY #	PART NAME
1	FRAME	37	CLUTCH LINK	77	LEAF SPRING
4	CLUTCH BAR	38	CLUTCH LINK SCREW	78	HANDLE
6	CLUTCH BAR SCREW	39	PINION YOKE	78X	HANDLE ASSEMBLY
7	LEVELWIND ASSEMBLY	40	PINION GEAR	79	BUSHING
8	PIPE	41	PINION YOKE SPRING (2)	80	HANDLE KNOB
9	WORM SHAFT	42	RATCHET	81	BALL BEARING (2)
10	BALL BEARING	43	RATCHET WASHER	82	HANDLE KNOB SCREW
12	IDLER(S)	44	DRIVE GEAR	83	HANDLE KNOB CAP
13	WORM SHAFT PIN	45	DRAG WASHER (L-3)	85	HANDLE NUT
15	WORM SHAFT BUSHING (B)	48	DRAG WASHER (D)	86	HANDLE NUT CAP
16	WORM SHAFT WASHER	49	SLEEVE WASHER (OPTIONAL)	87	SCREW
17	E-RING	50	SLEEVE	88	SPOOL
18	PILLAR	51	GEAR SIDEPLATE	88X	SPOOL ASSEMBLY
19	LEVELWIND PIN	51X	GEAR SIDEPLATE ASSEMBLY	89	BALL BEARING
20	SPACER (OPTIONAL)	53	ONE-WAY CLUTCH BEARING	90	PIN
21	LEVELWIND NUT	54	C-RING	96	PALMING SIDEPLATE
22	FRONT COVER	55	BALL BEARING	96X	PALMING SIDEPLATE ASSEMBLY
23	FRONT COVER SCREW (2)	56	BEARING RETAINER	98	CONTROL DIAL
24	BALL BEARING	57	CAST CONTROL CAP	99	SPOOL COVER
25	CRANKSHAFT	57X	CAST CONTROL CAP ASSEMBLY	101	MAGNET HOLDER PLATE-F
26	IDLER (L) WASHER (A)	61	TENSION WASHER	102	MAGNET (5)
27	IDLER (L)	62	SPOOL SPACER (B)	103	MAGNET HOLDER SPRING (2)
28	IDLER(L) WASHER (B)	63	LOCKING PIN	103	SLIDE CAM-F
29	BEARING PLATE	64	E-RING	105	SPOOL COVER SCREW (3)
30	E-RING	65	LOCKING PIN SPRING	106	SPOOL SPACER-A
31	BEARING PLATE SCREW	66	GEAR SIDEPLATE SCREW (A)	107	BALL BEARING
33	CLUTCH CAM	67	GEAR SIDEPLATE SCREW (B)	108	BEARING RETAINER
34	CLUTCH SPRING	71	DRAG SPRING WASHER (A-2)	124	SLIDE CAM-D
35	KICK LEVER	72	DRAG SPACER	125	CLICK SPRING
36	KICK LEVER SPRING	73	STAR DRAG		